

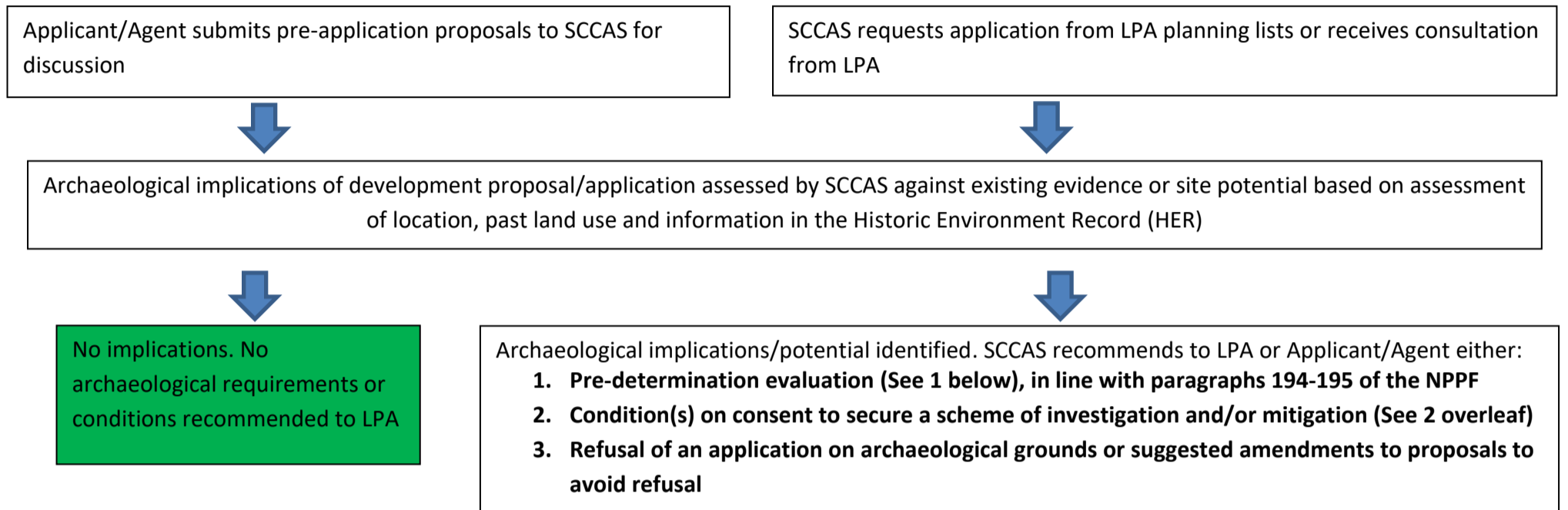
ARCHAEOLOGY DEVELOPMENT MANAGEMENT ADVICE



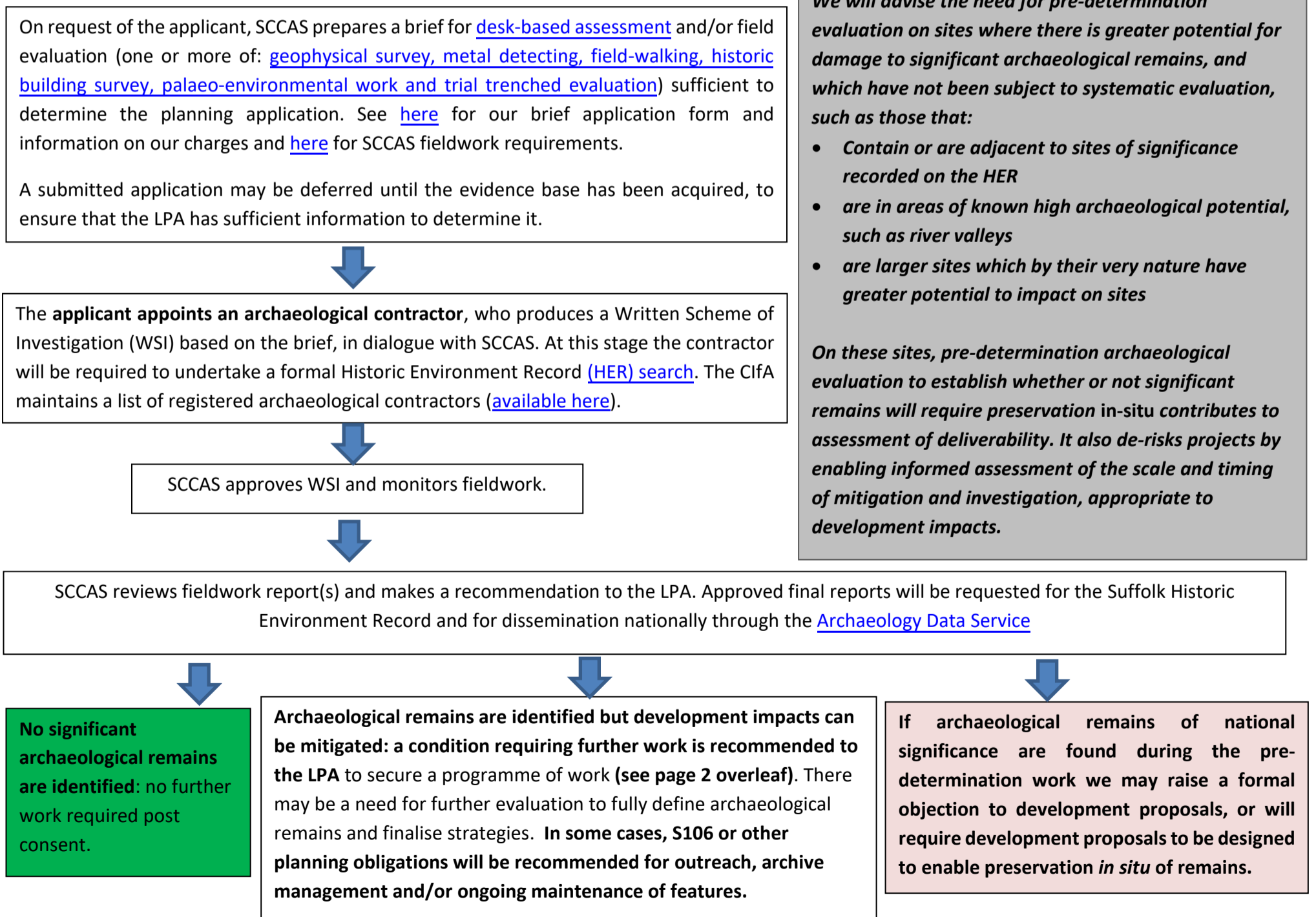
Suffolk County Council Archaeological Service (SCCAS) advises Local Planning Authorities (LPAs) and developers in the County. This flowchart takes you through the archaeological processes that we follow to ensure that developments are delivered in line with Chapter 16 of the [National Planning Policy Framework](#) (NPPF).

SCCAS offers free initial pre-application advice to developers to de-risk projects, facilitate smooth progress and ensure good practice. **We strongly advise consultation at the earliest opportunity** to ensure that necessary archaeological work does not cause any unexpected problems, or introduce unexpected time and costs in project programmes (contact archaeology@suffolk.gov.uk or 01284 741230). SCCAS on request provides briefs to ensure that work is appropriate and fit for purpose.

CONSULTATION



1. PRE-DETERMINATION ASSESSMENT



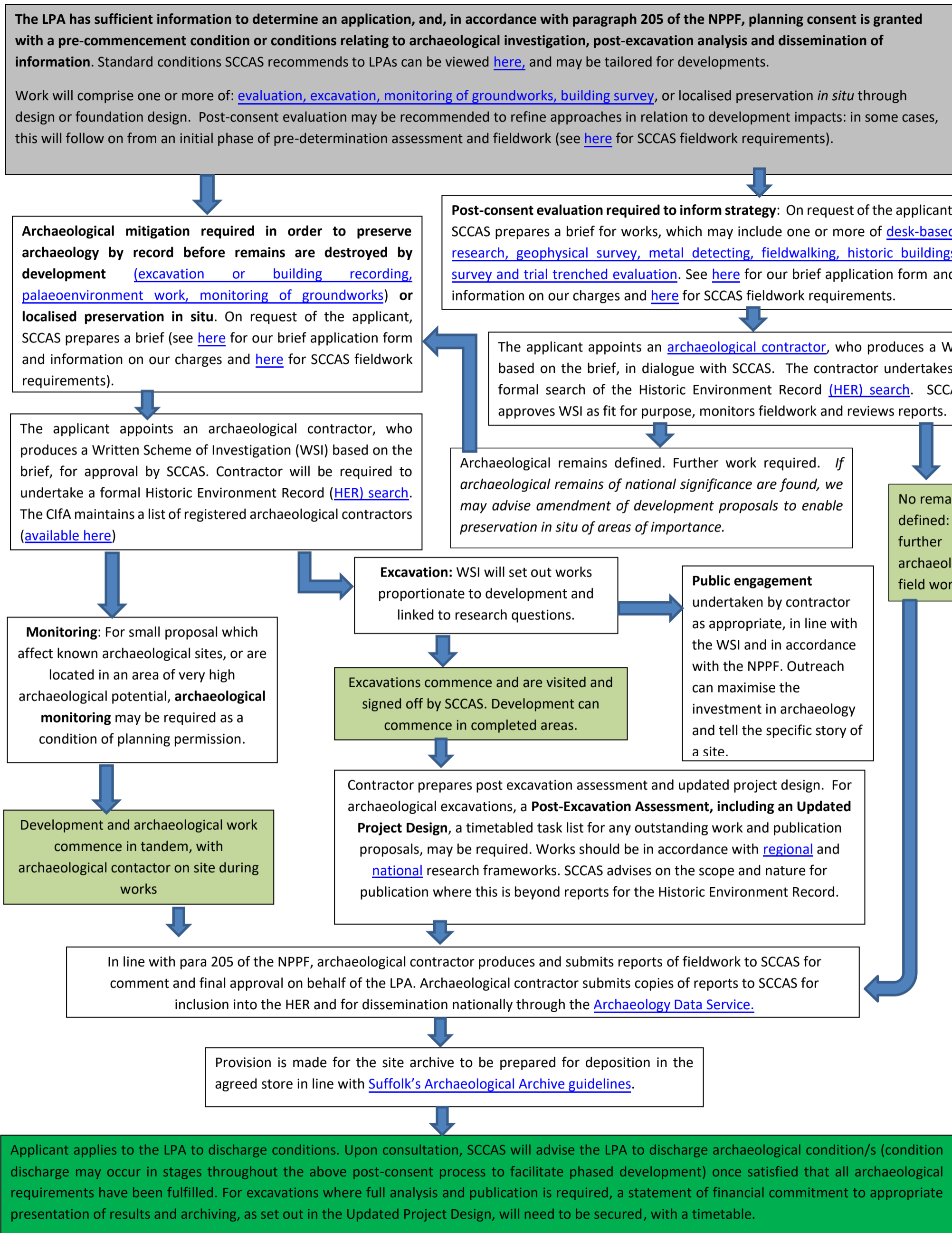
We will advise the need for pre-determination evaluation on sites where there is greater potential for damage to significant archaeological remains, and which have not been subject to systematic evaluation, such as those that:

- *Contain or are adjacent to sites of significance recorded on the HER*
- *are in areas of known high archaeological potential, such as river valleys*
- *are larger sites which by their very nature have greater potential to impact on sites*

On these sites, pre-determination archaeological evaluation to establish whether or not significant remains will require preservation in-situ contributes to assessment of deliverability. It also de-risks projects by enabling informed assessment of the scale and timing of mitigation and investigation, appropriate to development impacts.

This flowchart is for guidance only. Advice will be tailored to each site on a case-by-case basis, based on national policy and guidance. [You can find out more about our advice and charges here](#). For further information, see [Advice from the Association of Local Government Archaeological Officers](#), the [Chartered Institute of Archaeologists](#), and [Historic England](#).

2. POST-CONSENT: ARCHAEOLOGICAL WORK BY CONDITION



This flowchart is for guidance only. Advice will be tailored to each site on a case-by-case basis, based on national policy and guidance. [You can find out more about our advice and charges here](#). For further information, see [Advice from the Association of Local Government Archaeological Officers](#), the [Chartered Institute of Archaeologists](#), and [Historic England](#).