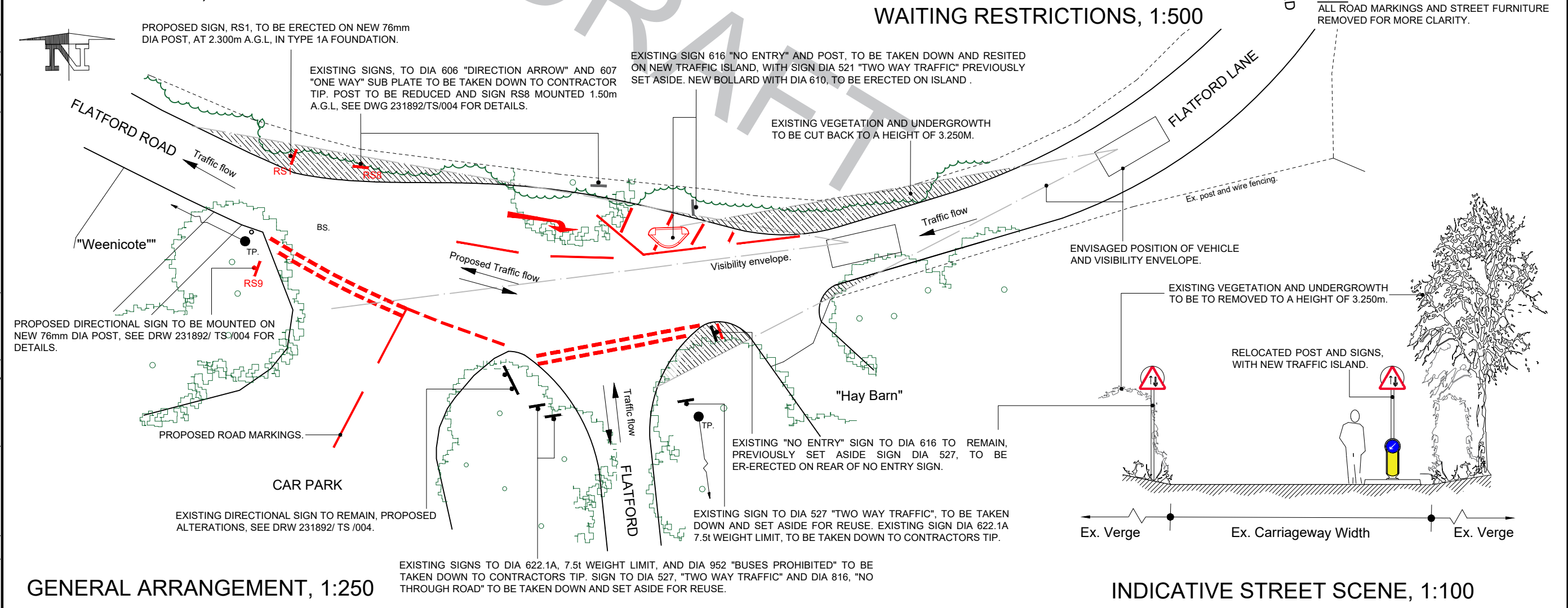
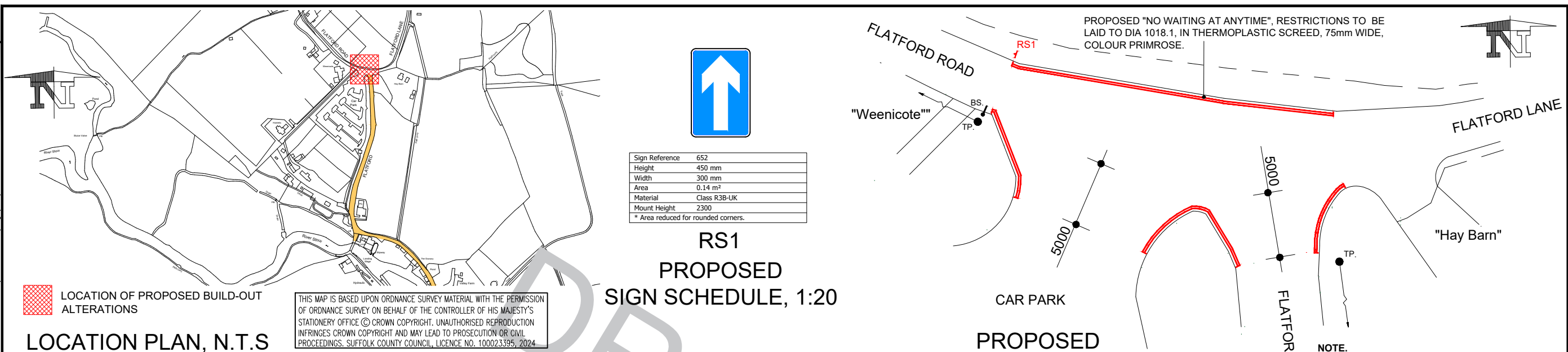


File Path R:\Transport & Infrastructure\Infrastructure Mgmt\CE & MW\Team\UHB Parish Files - From 1st October 2023\East Bergholt\Flatford Mill TRO & access improvements\Draw\Proposed TRO DRAFT CHECKED Rev C.dwg
 Plot date 24/06/2024



<p>SUFFOLK HIGHWAYS Working together to build a positive legacy for Suffolk</p> <p>Phoenix House, 3 Goddard Road, Ipswich, Suffolk IP1 5NP. Highways enquires: 0345 606 6171 www.suffolk.gov.uk/highways</p>	<p>NOTE(S):</p> <p>1) DRAWING TO BE READ IN CONJUNCTION WITH 231892/GA/002 - 004.</p> <p>2) ANY CHANGES TO BE NOTIFIED TO DESIGN ENGINEER.</p>	<p>REVISION(S)</p> <p>Additional directional signs added.</p>	<p>REV. DATE INTL.</p> <p>A 06/24 JCCr</p>	<p>PROJECT TITLE</p> <p>FLATFORD, EAST BERGHOLT PROPOSED TRAFFIC IMPROVEMENTS</p>	<p>ORIGINATOR</p> <p>NT</p>	<p>CHECKER</p> <p>PW</p>	<p>DESIGNER</p> <p>JCCr</p>	<p>REVIEWER</p>
				<p>DRAWING TITLE</p> <p>PROPOSED TWO WAY VEHICLE MOVEMENT</p>	<p>SCALE(S)</p> <p>ORIGINAL SIZE AS AS SHOWN</p>	<p>DATE</p> <p>APR 2024</p>	<p>DRAWING NUMBER</p> <p>231892 / TRO 1 / 001</p>	<p>REVISION</p> <p>A</p>

PRELIMINARY DESIGN