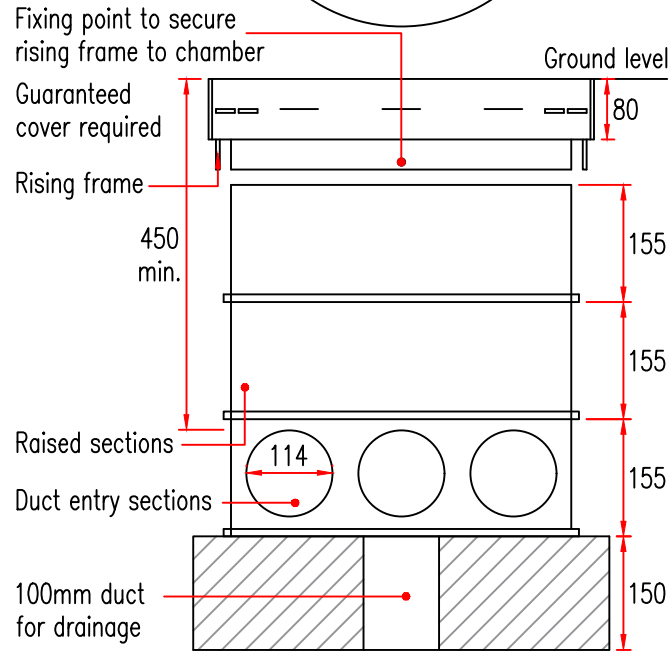
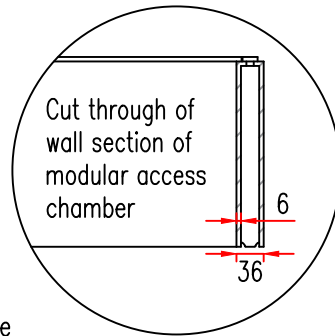


PLAN



ELEVATION

NOTES

1. Composite covers must be load tested with 25 tonne loading.
2. Composite covers must have a minimum skid resistance value (sr_v) of 80.
3. Frames must have a minimum up stand of 80mm to enable pavement materials to be installed directly against the frame. frames must not have an external flange.
4. Frames must have a fixing mechanism which enables them to be mechanically secured to the access chamber.
5. Composite covers and frames to be supplied to the above specification by NAL LTD or equally approved manufacturer.
6. Access chambers must be tested to withstand a minimum vertical load of 40 tones without the use of concrete for surround support.
7. External walls shall have an external rib of width no greater than 15mm, positioned at the bottom of each section to allow full section depth compaction.
8. External walls shall be free from moulding voids that will negatively impact the effectiveness of compaction.
9. Access chambers must have the ability to allow internal cable management furniture to be retrofitted without the need for any excavation.
10. All covers to be fixed with screws/bolts as manufacturer's specification.



Growth, Highways & Infrastructure
Suffolk County Council
Endeavour House
8 Russell Road
Ipswich
Suffolk IP1 2BX

DRAWING TITLE

DRAINAGE AND SERVICE DUCTS
MODULAR ACCESS CHAMBER

REV.	DESCRIPTION	CHECKED	DATE

INIT.	DATE	PROJECT TITLE	
RY	08/2024	STANDARD CONSTRUCTION DETAILS	
SH	08/2024	SCALE	DATE
RY	08/2024	N.T.S.	AUG. 2024
TK	08/2024	DRAWING No.	
		DM-500-11	