

# Year 11 Activity Survey

And other updates

A perfect storm.....

### Year 10 & 11

from 2020-2022:

% increase in EHE

36% increase in exclusions

10% increase in suspensions

23% increase in Free School Meals

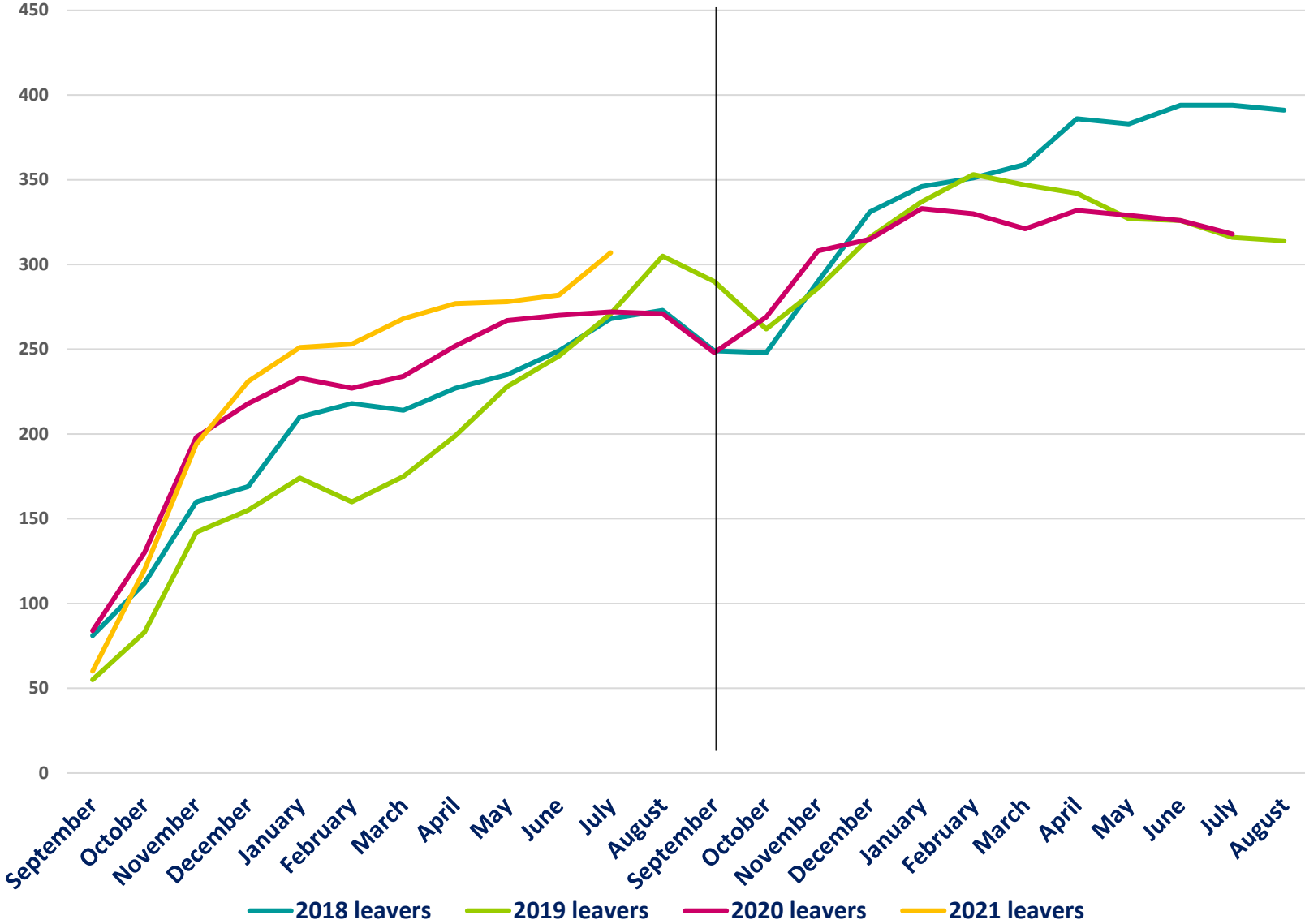
0.7% increase in yr 11

unauthorised absence sessions

Persistent Absence has increased across the school system to approx. 23%

- The total cohort size (Year 12&13) has increased by 11.3% from March 2019 - 14145, to March 2022 at 15742. Although the county's overall % NEET has reduced, the actual number has increased from 486 in March 2019 to 589 in March 2022.
- yp with an EHCP are on the increase - in March 2019 the Year 12/13 cohort was 548 (53 were NEET) and in March 2022 it was 775 (87 were NEET)
- In March 2019 there were 105 NEET yp 'not ready for EET' (yp who require a higher level of support due to the complexity of their needs and barriers) and in March 2022 there were 169 yp in this category
- impact of Covid.
- ESF Funding ending

### NEET/month - over a two year period covering Yr12 &13



Year 11 leaver cohorts since 2018 with subsequent NEET numbers per month

## Perfect storm..

- Change of focus by EHTs – NEET Prevention in Year 11/12 + focussed NEET work
- EHT Partnership Agreement + meetings
- PTT Data sharing + Guide has not changed. We are happy to meet virtually to iron out any issues, support new people
- NB passwords/encryptions

## 2 things happening concurrently + 2 different depts (EHT & PTT)

### Year 11 Activity Survey 2022 leaver gp.....and 2023 year 11 leaver gp

Progress as of 1/9 Sept Offer: 96.1% offers made, 104 still to contact, 124 'no offers' logged

#### What now?

- **PTT** -1<sup>st</sup> College/sixth form college updates being added now
  - **PTT** -school 6<sup>th</sup> forms send starter lists – email gone out last wk
  - **PTT** -send lists back to schools to fill in blanks in Oct
  - **PTT** -schools provide updates/work collaboratively with **EHT** & link YPW – NEET prevention
- Aiming for a 1<sup>st</sup> Nov snapshot
- **PTT** -send final results Nov/Dec

- PTT Autumn term - First lot of data from school + **CONTACT INFO** (more important than ever) next week
- Notify changes eg-in gender, if leave to EHE/PEX etc or move address/change school, throughout the year
- PTT - data from ATS/EHE, PRUs/Specialist Provision, CME
- NB Schools Guide 2022-3 (June & Aug) + importance of the parent letter
- EHT meetings re new Year 11s - NEET Prevention

Sept	Oct/Nov	Dec/Jan	Feb/March	April /May
Year 11 Activity Survey starts	Snap shot backdated to Nov 1 <sup>st</sup>	Final results to schools	1 <sup>st</sup> Cohort check complete + 2 <sup>nd</sup> update	Sept Offer info from schools
End of Sept Offer and report to DfE	EHT termly meetings – AT RISK OF NEET	Report sent in to DfE Jan	Sept Offer info from colleges starts	End May fixing of 2023 cohort