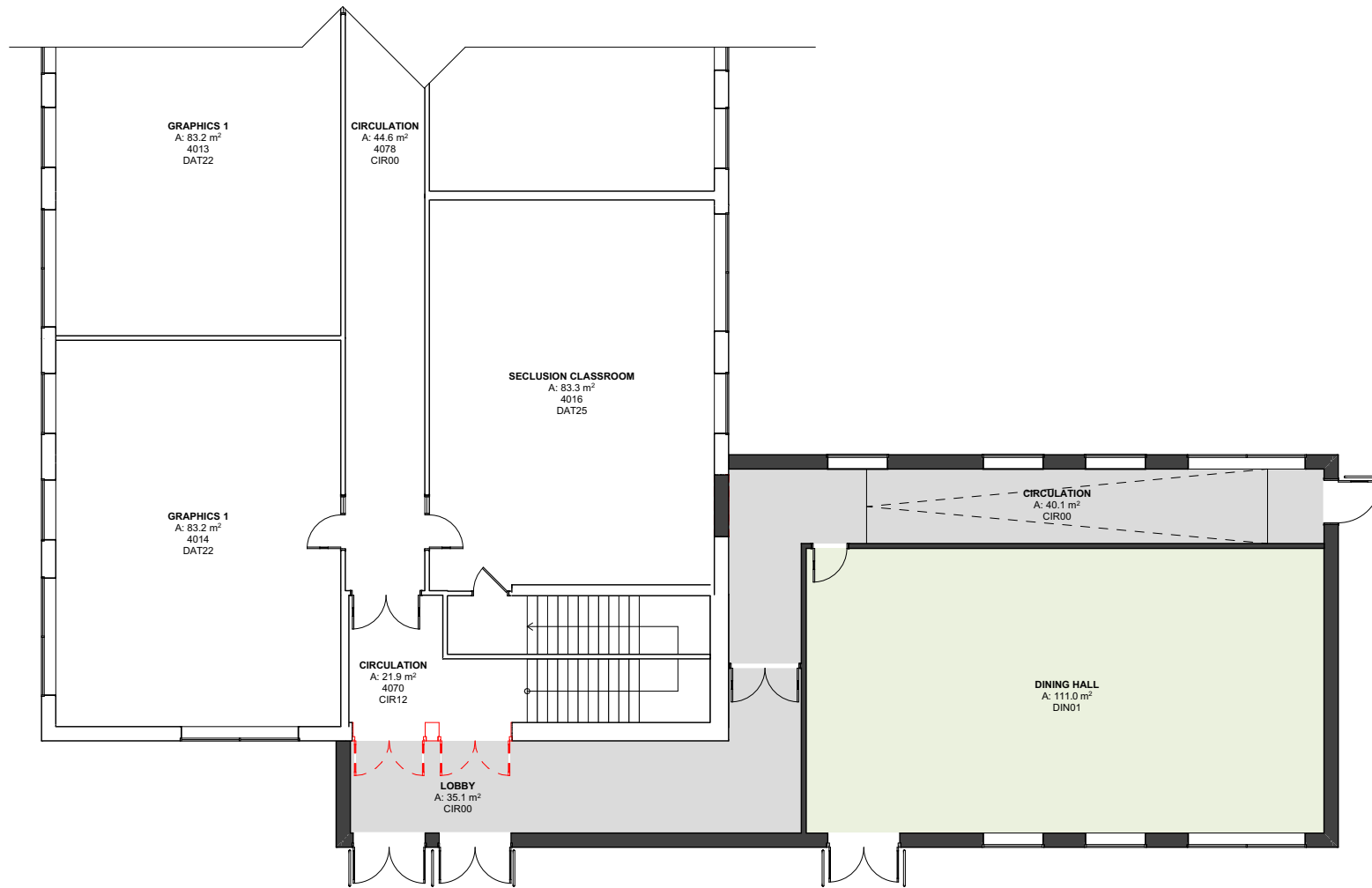


Ground Floor General Arrangement Plan

Refer to the detailed drawing below for full scopes of works: -



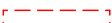
223092-CDP-ZZ-00-DR-A-3001-P02 General Arrangement Plan - Proposed Ground Floor



The ground floor consists of additional dining space, inclusion room with integral office/meeting room and unisex WCs. Close engagement with the end user has identified vandalism concerns in the existing toilet configuration and have requested separate toilet facilities are explored as part of the CEM process. It is likely that this arrangement will incur additional costs to the project due to additional fixtures and fittings and structural arrangements.

An additional lift has also been requested by the school to enhance accessibility around the school.

KEY

-  Existing Wall
-  Proposed Wall
-  Items to be demolished/removed

