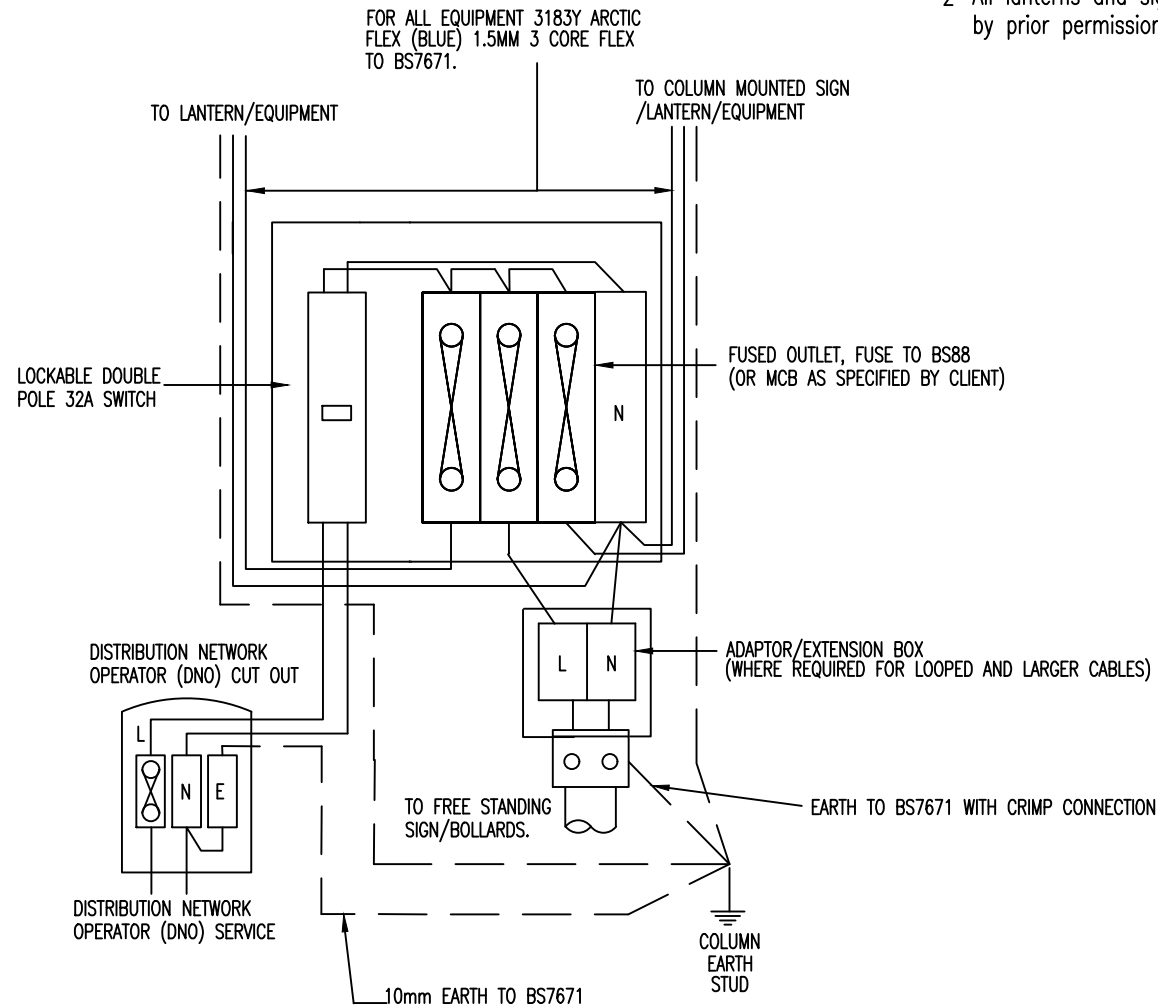


NOTES

- 1 Wiring shall be kept in a neat and orderly manner by means of ties or similar and kept to one side of the control equipment/backboard.
- 2 All lanterns and signlighting units to have integral control equipment except by prior permission from the Client.



Suffolk County Council
 Endeavour House
 8 Russell Road
 Ipswich
 Suffolk IP1 2BX

ELECTRICAL WORKS
 TYPICAL BASE COMPARTMENT WIRING - 2X LANT OR
 LANT, WITH COL MOUNTED SIGN AND REMOTE SIGNS
 OR BOLLARD(S) SWITCHED & FUSED, R.E.C SERVICE

REV.	DESCRIPTION	CHECKED	DATE

ORIGINATOR	INIT.	DATE	PROJECT TITLE	
CG	CG	03/22	STANDARD CONSTRUCTION DETAIL	
CHECKER	AA	09/22	SCALE	DATE
DESIGNER	PW	09/22	N.T.S.	SEPT 2022
REVIEWER	RIB	04/22	DRAWING No. SCD 1400-5	