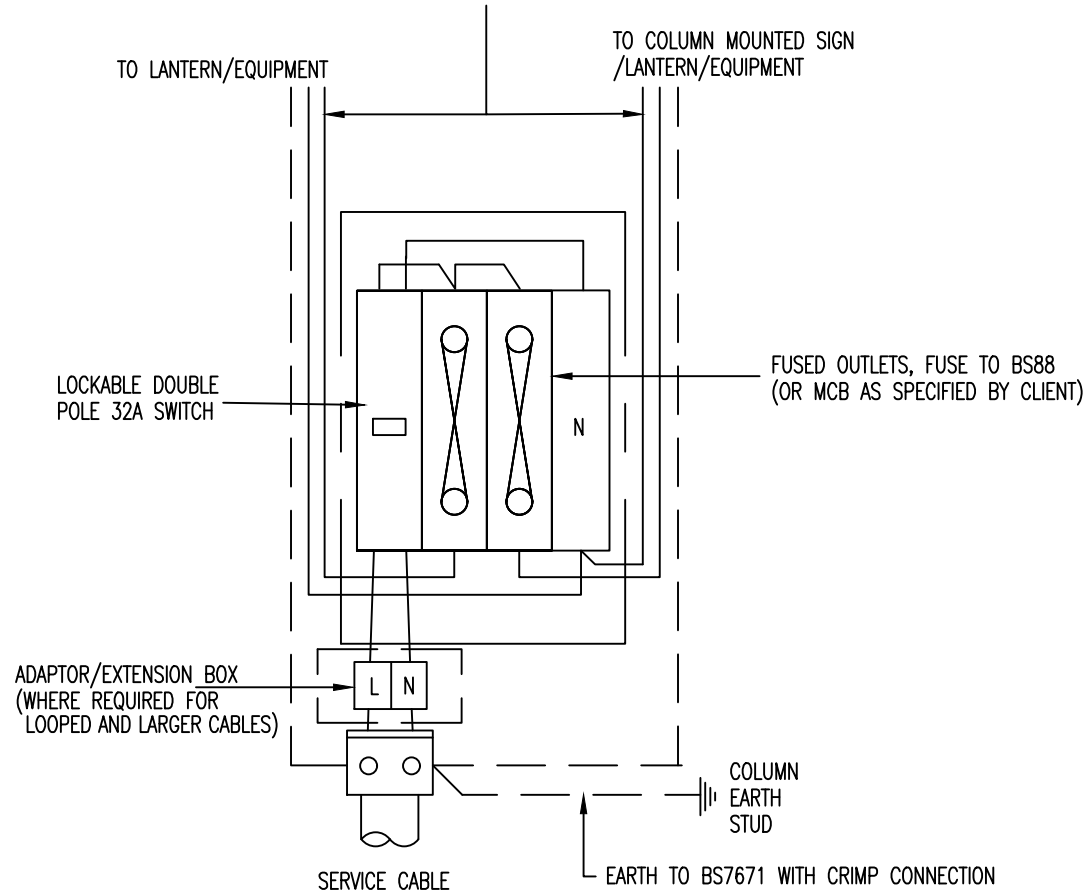


NOTES

1. Wiring shall be kept in a neat and orderly manner by means of ties or similar and kept to one side of the control equipment/backboard.
2. All lanterns and signlighting units to have integral control equipment except by prior permission from the Client.

FOR ALL EQUIPMENT 3183Y ARCTIC FLEX (BLUE)
1.5MM 3 CORE FLEX TO BS7671



Suffolk County Council
Endeavour House
8 Russell Road
Ipswich
Suffolk IP1 2BX

ELECTRICAL WORKS
TYPICAL BASE COMPARTMENT WIRING
DOUBLE LANTERN OR LANTERN & COLUMN
MOUNTED SIGN, SWITCHED & FUSED, PRIVATE CABLE

REV.	DESCRIPTION	CHECKED	DATE

ORIGINATOR	INIT.	DATE	PROJECT TITLE STANDARD CONSTRUCTION DETAIL	
CG	CG	03/22	SCALE	DATE
AA	AA	09/22	N.T.S.	SEPT 2022
PW	PW	09/22	DRAWING No.	
RIB	RIB	04/22	SCD 1400-9	