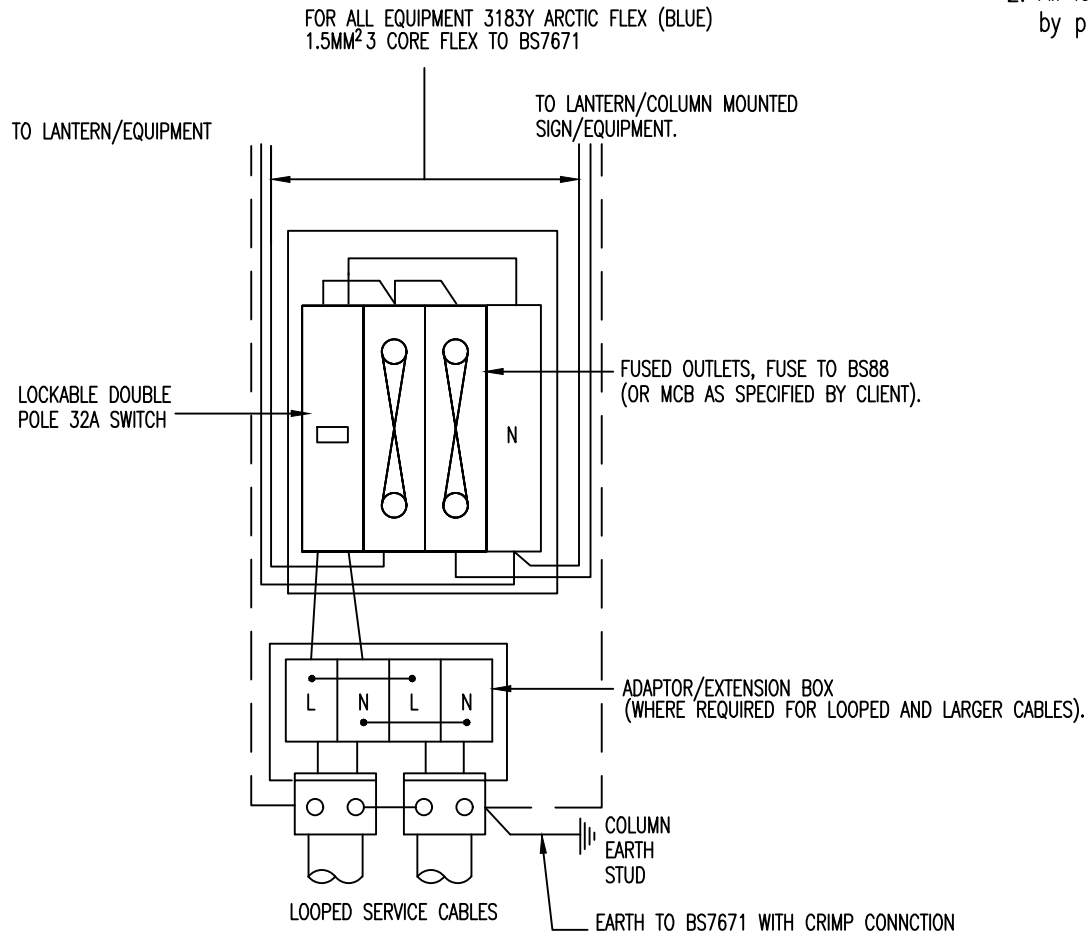


NOTES

1. Wiring shall be kept in a neat and orderly manner by means of ties or similar and kept to one side of the control equipment/backboard.
2. All lanterns and signlighting units to have integral control equipment except by prior permission from the Client.



Suffolk County Council  
Endeavour House  
8 Russell Road  
Ipswich  
Suffolk IP1 2BX

ELECTRICAL WORKS  
TYPICAL BASE COMPARTMENT WIRING  
DOUBLE LANTERN OR LANTERN & COL, MOUNTED  
SIGN, SWITCHED & FUSED, PRIVATE CABLE (LOOPED)

REV.	DESCRIPTION	CHECKED	DATE

ORIGINATOR	INIT.	DATE	PROJECT TITLE STANDARD CONSTRUCTION DETAIL	
CG	CG	03/22	SCALE N.T.S.	DATE SEPT 2022
CHECKER	AA	09/22	DRAWING No. SCD 1400-10	
DESIGNER	PW	09/22		
REVIEWER	RIB	04/22		