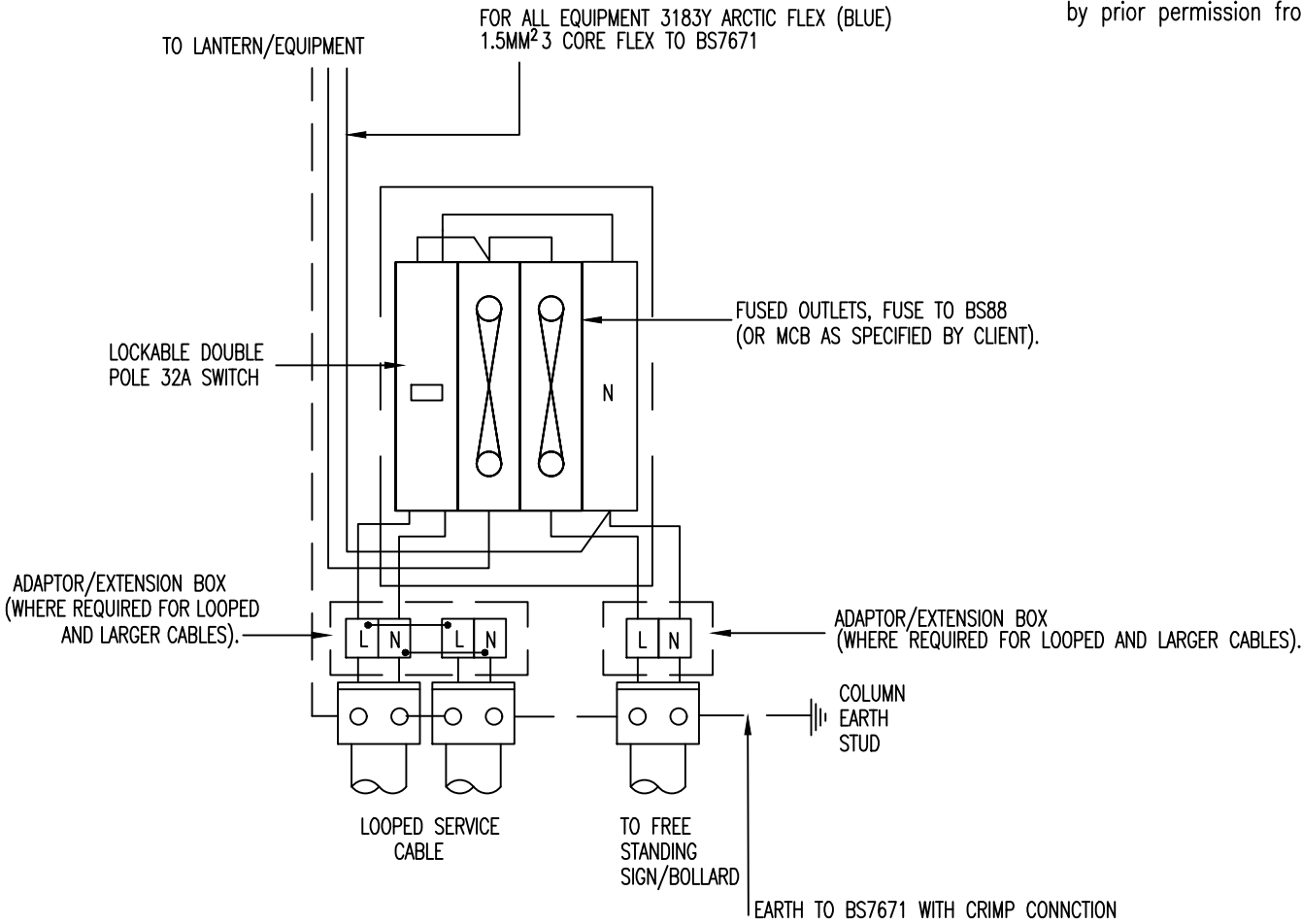


NOTES

1. Wiring shall be kept in a neat and orderly manner by means of ties or similar and kept to one side of the control equipment/backboard.
2. All lanterns and signlighting units to have integral control equipment except by prior permission from the Client.



Suffolk County Council  
 Endeavour House  
 8 Russell Road  
 Ipswich  
 Suffolk IP1 2BX

ELECTRICAL WORKS  
 TYPICAL BASE COMPARTMENT WIRING  
 LANTERN AND REMOTE SIGN, OR BOLLARD(S)  
 SWITCHED AND FUSED, PRIVATE CABLE (LOOPED)

REV.	DESCRIPTION	CHECKED	DATE

ORIGINATOR	INIT.	DATE	PROJECT TITLE	
CG	CG	03/22	STANDARD CONSTRUCTION DETAIL	
CHECKER	AA	09/22	SCALE	DATE
DESIGNER	PW	09/22	N.T.S.	SEPT 2022
REVIEWER	RIB	04/22	DRAWING No. SCD 1400-12	