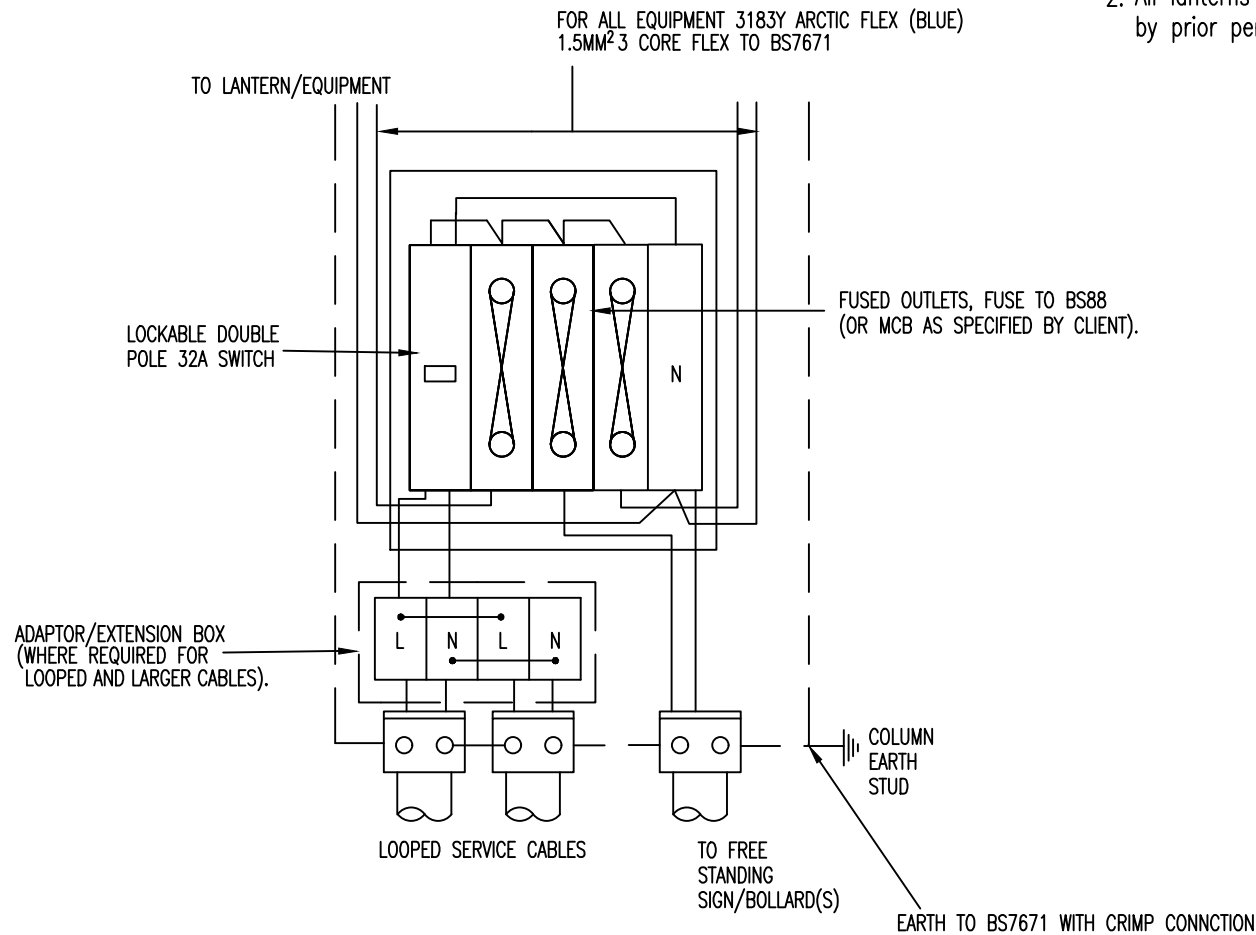


NOTES

1. Wiring shall be kept in a neat and orderly manner by means of ties or similar and kept to one side of the control equipment/backboard.
2. All lanterns and signlighting units to have integral control equipment except by prior permission from the Client.



Suffolk County Council  
 Endeavour House  
 8 Russell Road  
 Ipswich  
 Suffolk IP1 2BX

ELECTRICAL WORKS  
 TYPICAL BASE COMPARTMENT WIRING - DOUBLE  
 LANTERN OR LANTERN WITH COL MOUNTED SIGN &  
 REMOTE SIGN OR BOLLARD(S), S & F, PRIVATE CABLE

REV.	DESCRIPTION	CHECKED	DATE

ORIGINATOR	INIT.	DATE	PROJECT TITLE	
CG	CG	03/22	STANDARD CONSTRUCTION DETAIL	
CHECKER	AA	09/22	SCALE	DATE
DESIGNER	PW	09/22	N.T.S.	SEPT 2022
REVIEWER	RIB	04/22	DRAWING No. SCD 1400-14	