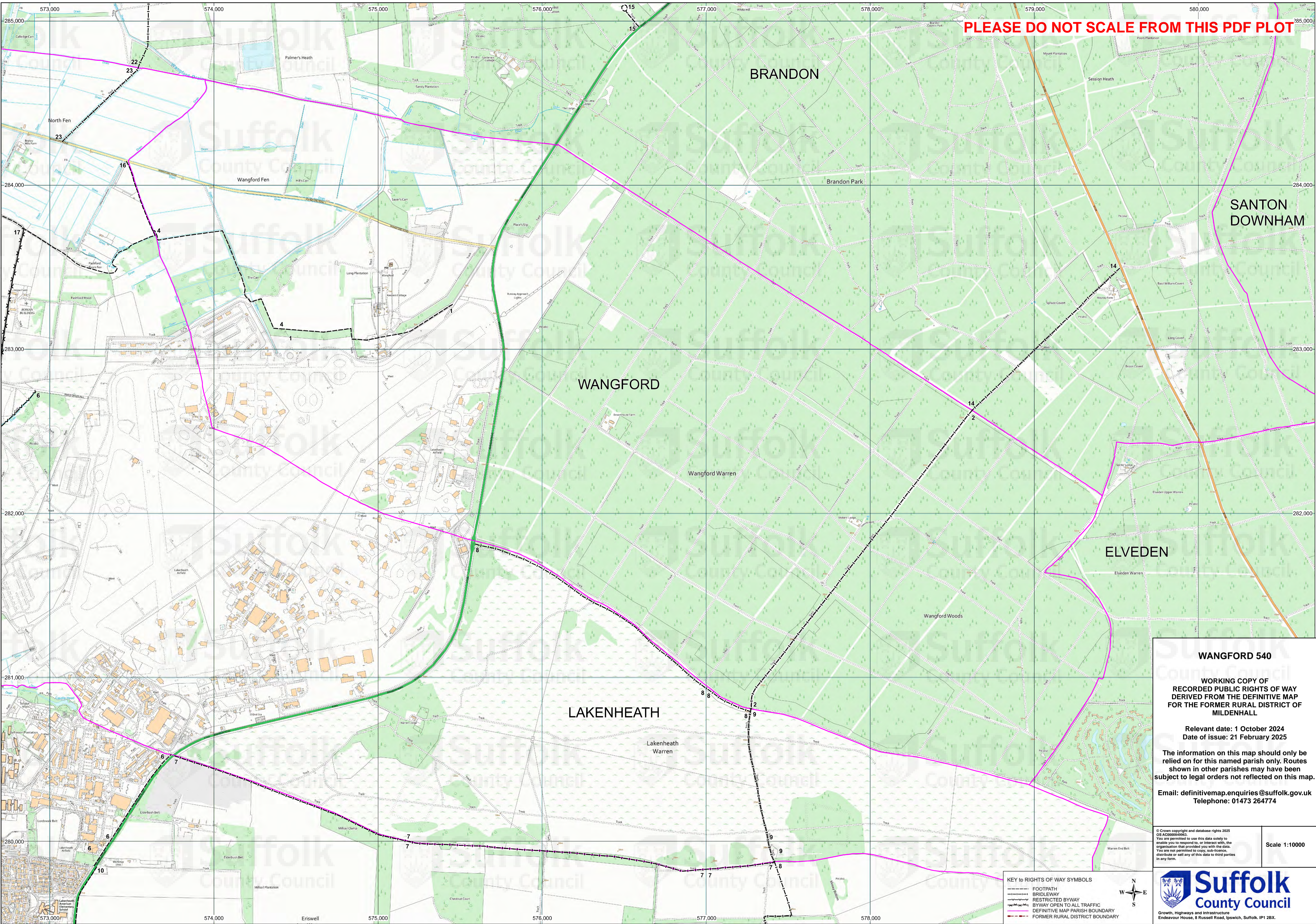


PLEASE DO NOT SCALE FROM THIS PDF PLOT



**WANGFORD 540**

**WORKING COPY OF  
RECORDED PUBLIC RIGHTS OF WAY  
DERIVED FROM THE DEFINITIVE MAP  
FOR THE FORMER RURAL DISTRICT OF  
MILDENHALL**


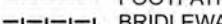
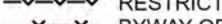
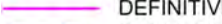

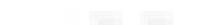
Relevant date: 1 October 2024  
Date of issue: 21 February 2025

The information on this map should only be  
relied on for this named parish only. Routes  
shown in other parishes may have been  
subject to legal orders not reflected on this map.

Email: [definitivemap.enquiries@suffolk.gov.uk](mailto:definitivemap.enquiries@suffolk.gov.uk)  
Telephone: 01473 264774

© Crown copyright and database rights 2025  
OS A000069003.  
You are permitted to use this data solely to  
enable you to respond to, or interact with,  
the organisation that provided you with the data.  
You are not permitted to copy, sub-license,  
distribute or sell any of this data to third parties  
in any form.

Scale 1:10000

- KEY TO RIGHTS OF WAY SYMBOLS**
-  FOOTPATH
  -  BRIDLEWAY
  -  RESTRICTED BYWAY
  -  BYWAY OPEN TO ALL TRAFFIC
  -  DEFINITIVE MAP PARISH BOUNDARY
  -  FORMER RURAL DISTRICT BOUNDARY



Growth, Highways and Infrastructure  
Endeavour House, 8 Russell Road, Ipswich, Suffolk, IP1 2BX.